

Lea H55 Sideboard

design Paolo Vernier, 2019

Lea sideboard, storage unit for living area with swing doors in wood or covered in fabric, faux leather or leather. Top in ceramic.

Lea sideboard is available in two versions: with a height 55 cm or 73 cm. The 55 cm version features an open shelf in glass.

Supported by the conical feet that maintain the line of the collection, the Lea sideboard is characterized by the extreme lightness of the shapes and the soft design. The coatings of the doors embrace the choice of elegant fabrics or traditional materials making it versatile and original to furnish contemporary environments with continuity.

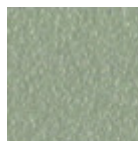


Colors and Materials

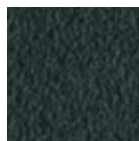
Structure



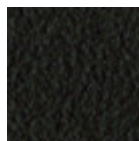
White steel



Sand steel



Grafite steel

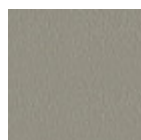


Brown steel

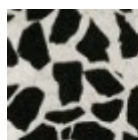


Black steel

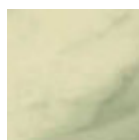
Coating



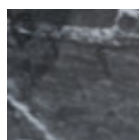
Laquered MDF
5 Colors



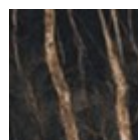
Venetian glossy
ceramic



Ceramic with effect
calacatta marble
1 color



Black greek glossy
marble ceramic



Noir desir glossy
ceramic marble

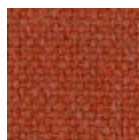
Extensions



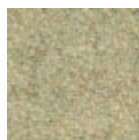
Bubble fabric
14 Colors



Carabù fabric
15 Colors



Cotton Club fabric
13 Colors



Fenix Wool fabric
13 Colors



Hot fabric
14 Colors



Main Line Flax fabric
16 Colors



Mirage fabric

6 Colors



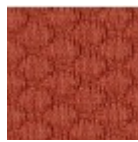
Scubidù fabric

10 Colors



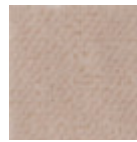
Second fabric

11 Colors



Visual fabric

11 Colors



Velvet Superb

15 Colors



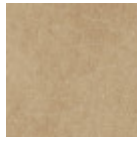
Flexy faux leather

5 Colors



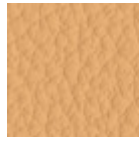
Secret faux leather

22 Colors



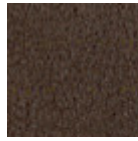
Vintage faux leather

12 Colors



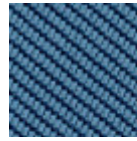
Fiore leather

18 Colors



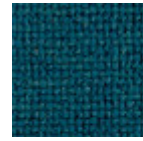
Vintage leather

4 Colors



Tessuto Oceanic

13 Colors



Manhattan fabric

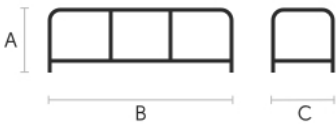
13 Colors



Yoredale fabric

14 Colors

Dimensions



	A (cm) (inch)	B (cm) (inch)	C (cm) (inch)
Lea H55 (cm)	55	180	40
(inch)	21.7	70.9	15.7
Lea H73 (cm)	73	210	48
(inch)	28.7	82.7	18.9

Volumetric Details

Weight 66 Kg

Volume 0.98 mc

Package 2

Downloads

[.3ds Madia Lea H55 \(zip\)](https://www.midj.com/images/uploads/resources/3d-lea-madia-h55-3ds.zip) - <https://www.midj.com/images/uploads/resources/3d-lea-madia-h55-3ds.zip>

[.obj Madia Lea H55 \(zip\)](https://www.midj.com/images/uploads/resources/3d-lea-madia-h55-3dobject.zip) - <https://www.midj.com/images/uploads/resources/3d-lea-madia-h55-3dobject.zip>

[.dwg Madia Lea H55 \(zip\)](https://www.midj.com/images/uploads/resources/3d-lea-madia-h55-dwg.zip) - <https://www.midj.com/images/uploads/resources/3d-lea-madia-h55-dwg.zip>

[.dxf Madia Lea H55 \(zip\)](https://www.midj.com/images/uploads/resources/3d-lea-madia-h55-dxf.zip) - <https://www.midj.com/images/uploads/resources/3d-lea-madia-h55-dxf.zip>

[.fbx Madia Lea H55 \(zip\)](https://www.midj.com/images/uploads/resources/3d-lea-madia-h55-fbx.zip) - <https://www.midj.com/images/uploads/resources/3d-lea-madia-h55-fbx.zip>